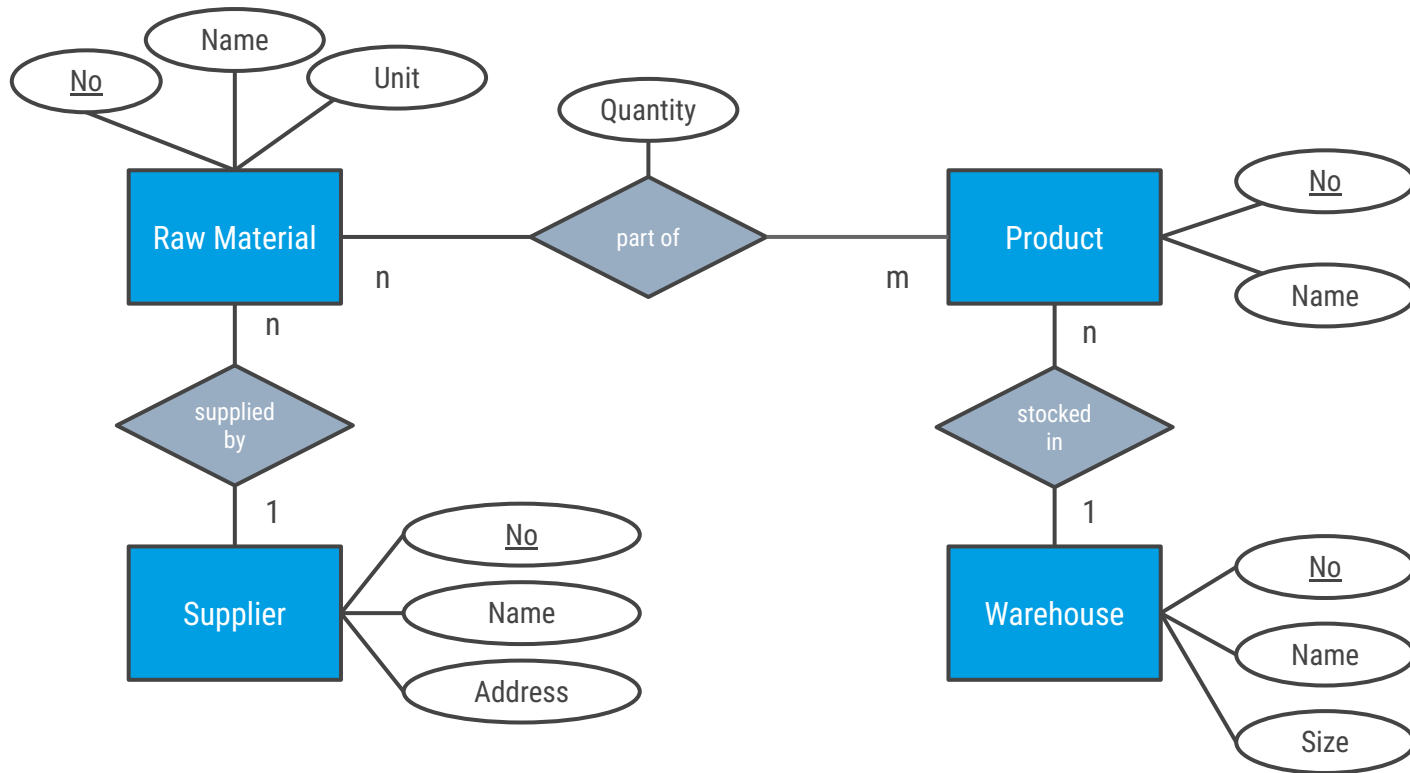
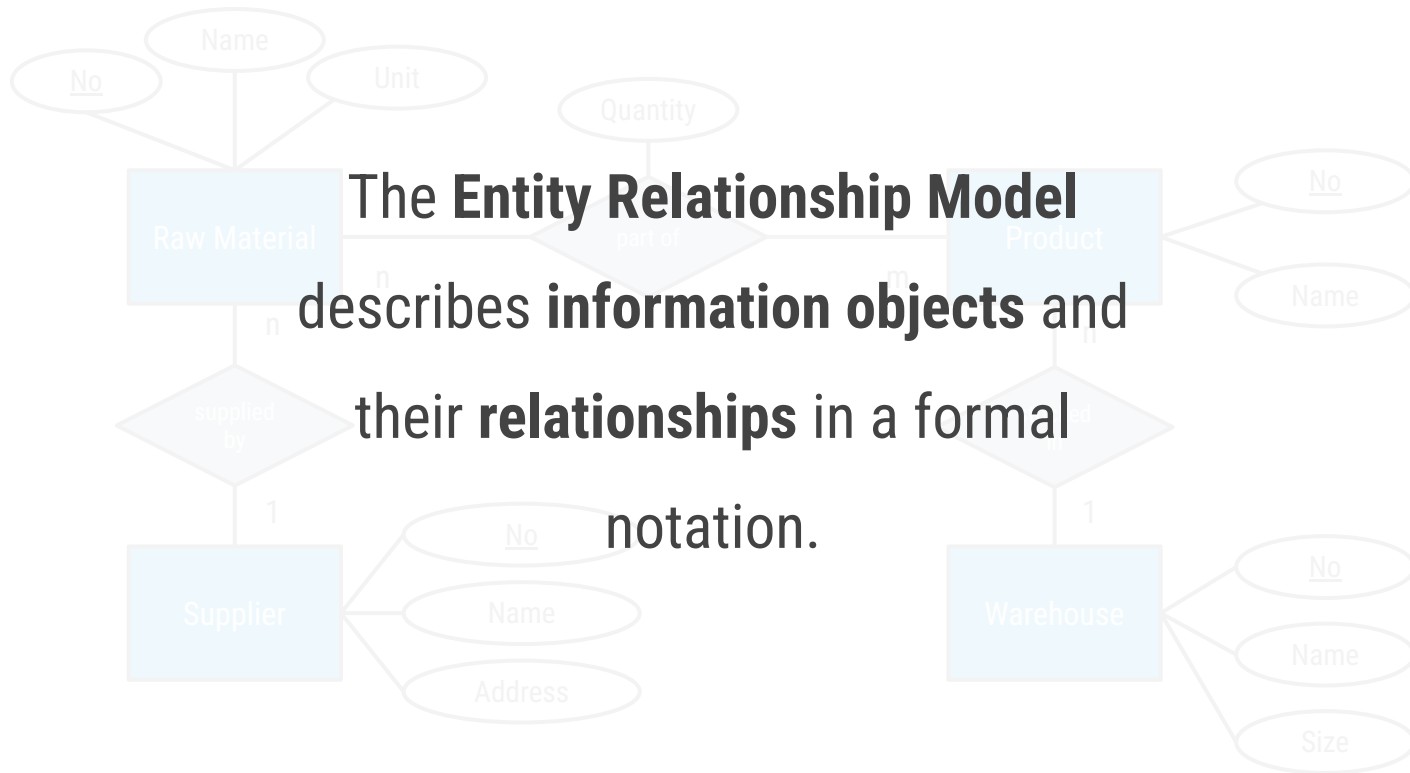


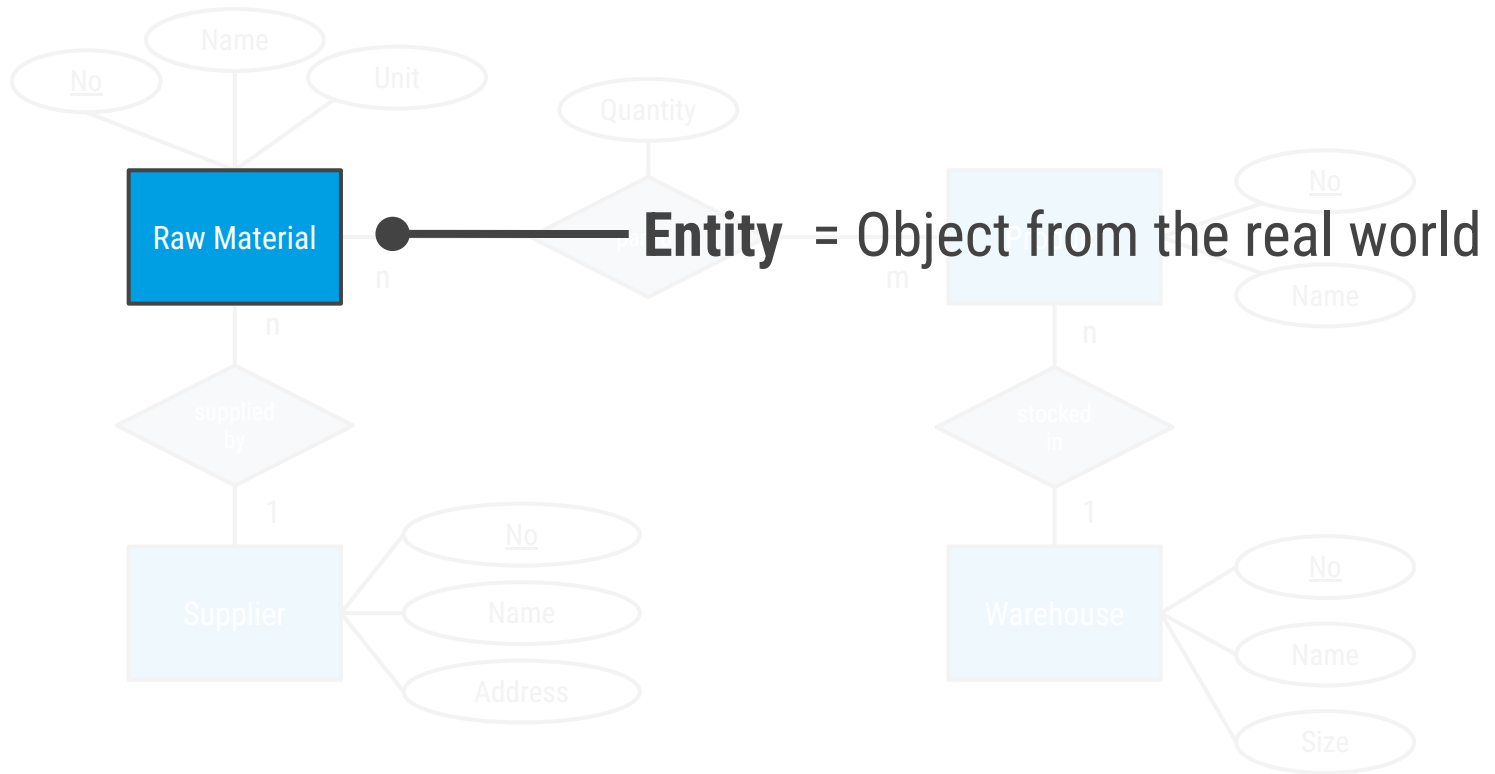


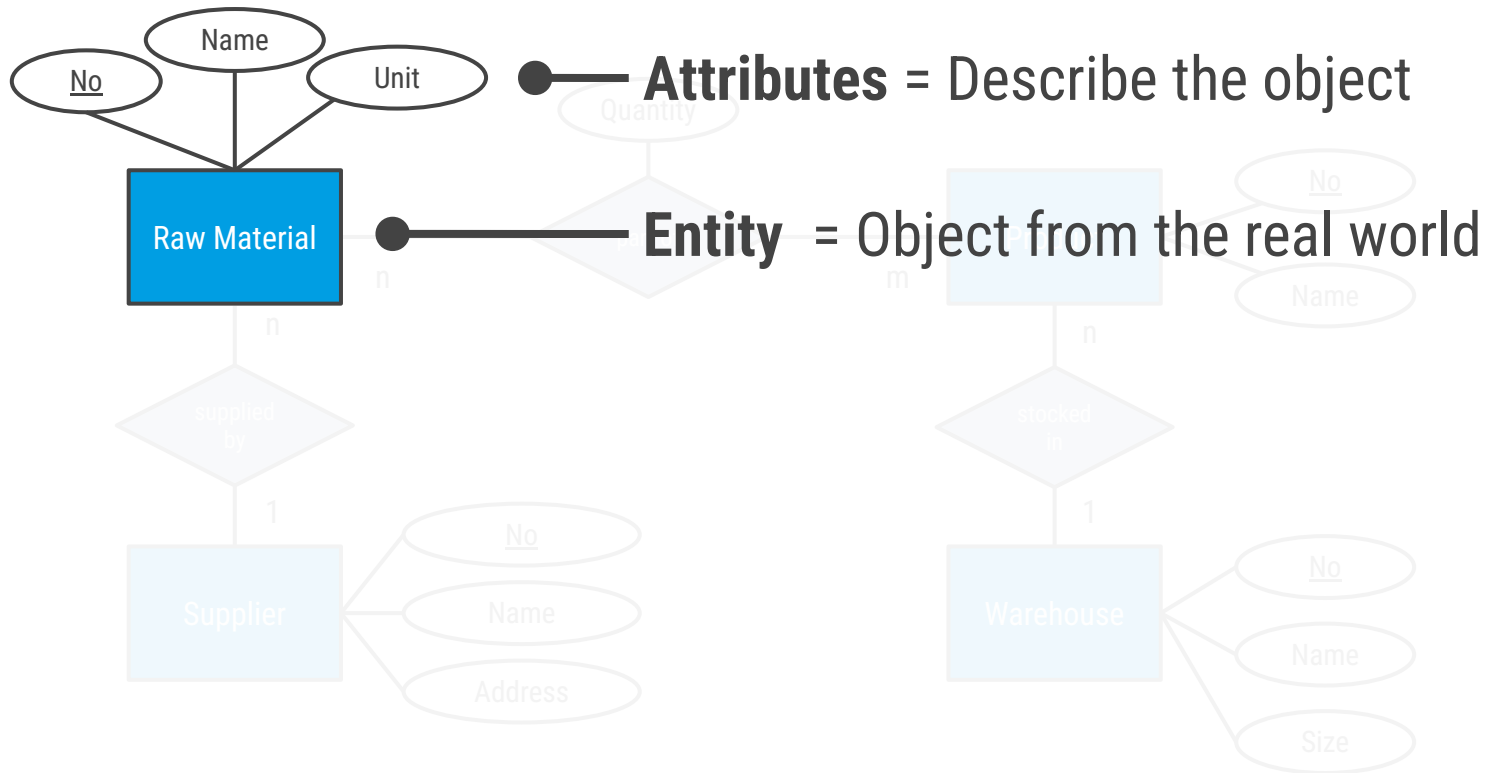
INFORMATION MANAGEMENT

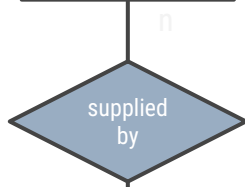
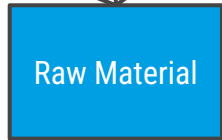
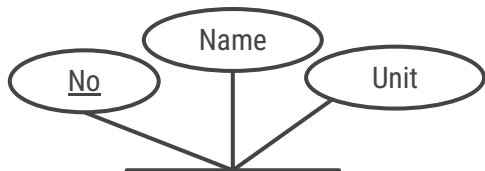
ENTITY RELATIONSHIP MODEL







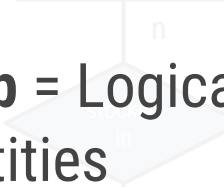
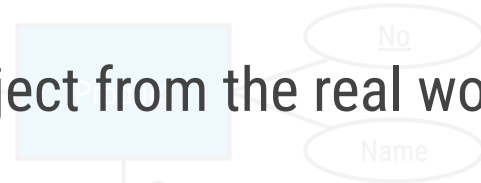


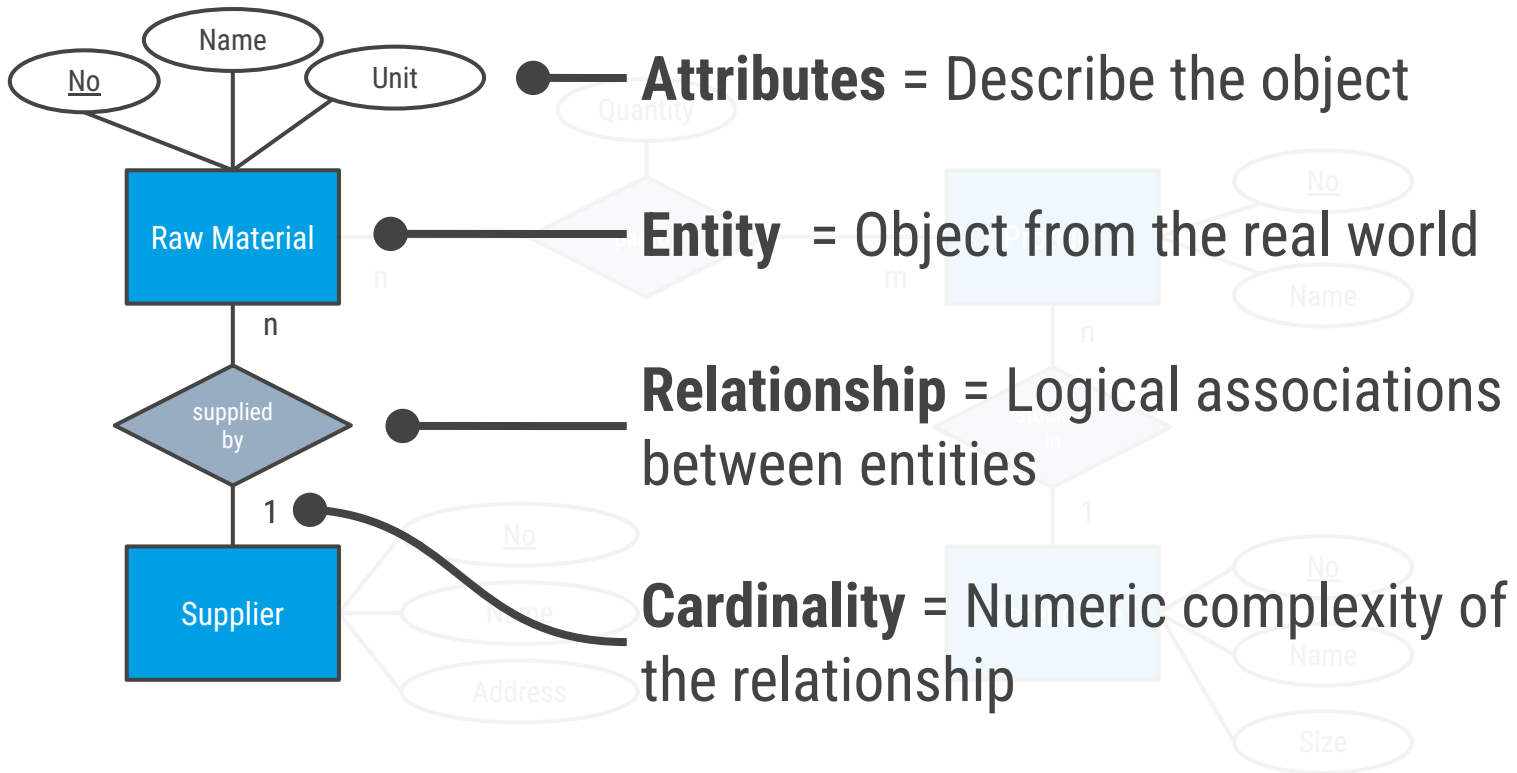


● **Attributes** = Describe the object

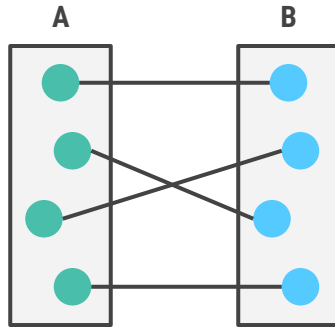
● **Entity** = Object from the real world

● **Relationship** = Logical associations between entities



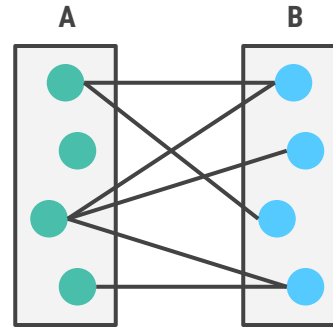


1 : 1



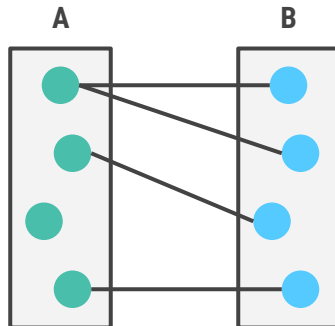
Every entity of type A can be in a relationship with exactly one entity of type B, and vice versa.

n : m



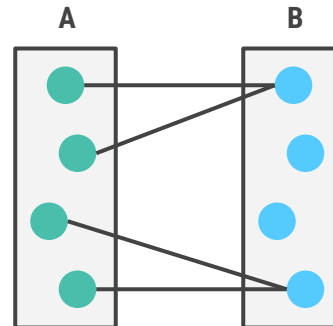
Every entity of type A can be in a relationship with none, one, or more entities of type B and, vice versa.

1 : n



Every entity of type A can be in a relationship with none, one, or more entities of type B.

n : 1



Every entity of type B can be in a relationship with none, one, or more entities of type A.